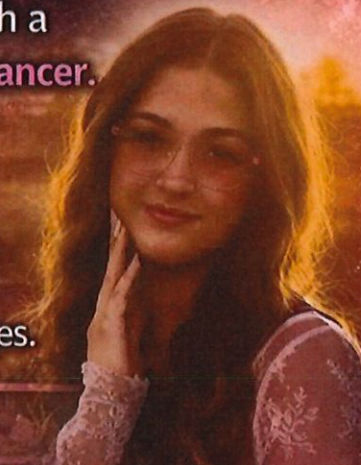


# **STAND WITH WELL**

**CANCER BENEFIT @ THE SHED - PAWNEE, IL**  
**SUNDAY, JUNE 14<sup>TH</sup>**

At just 19 years old, Aly's life changed with a diagnosis of **Stage 3 HER2-positive breast cancer**.

A nursing student at SIUE with a passion for helping others, she is now facing the fight of her life — undergoing chemotherapy and traveling for treatments while balancing overwhelming emotional and financial challenges.



**Now it's our turn to show up for her.**

Join us as we come together as a community to support Aly in her fight — helping ease the burden so she can focus on healing and staying strong.



**DONATE TO ALY**



**venmo**

**JEEP • MOTORCYCLE • SIDE-BY-SIDE RUN**

== ALL VEHICLES WELCOME ==

**RIDE LEAVES AT 11:00 AM!**

**LIVE MUSIC: JAMESON FREEWAY**

**STARTS AT 4:00 PM!**

== SILENT AUCTION & LIVE AUCTION ==



♥ **COME RIDE. COME SUPPORT. COME STAND WITH WELL.** ♥

**EVERY DONATION MAKES A DIFFERENCE!**